

**LEGEND**

- NEW**
- STANDARD RESPONSE UPRIGHT SPRINKLER 80 K-FACTOR
  - + TEE
  - SPRINKLER PIPING
  - ⬡ HYDRAULIC POINTS

- EXISTING**
- STANDARD RESPONSE PENDENT SPRINKLER
  - SPRINKLER PIPING

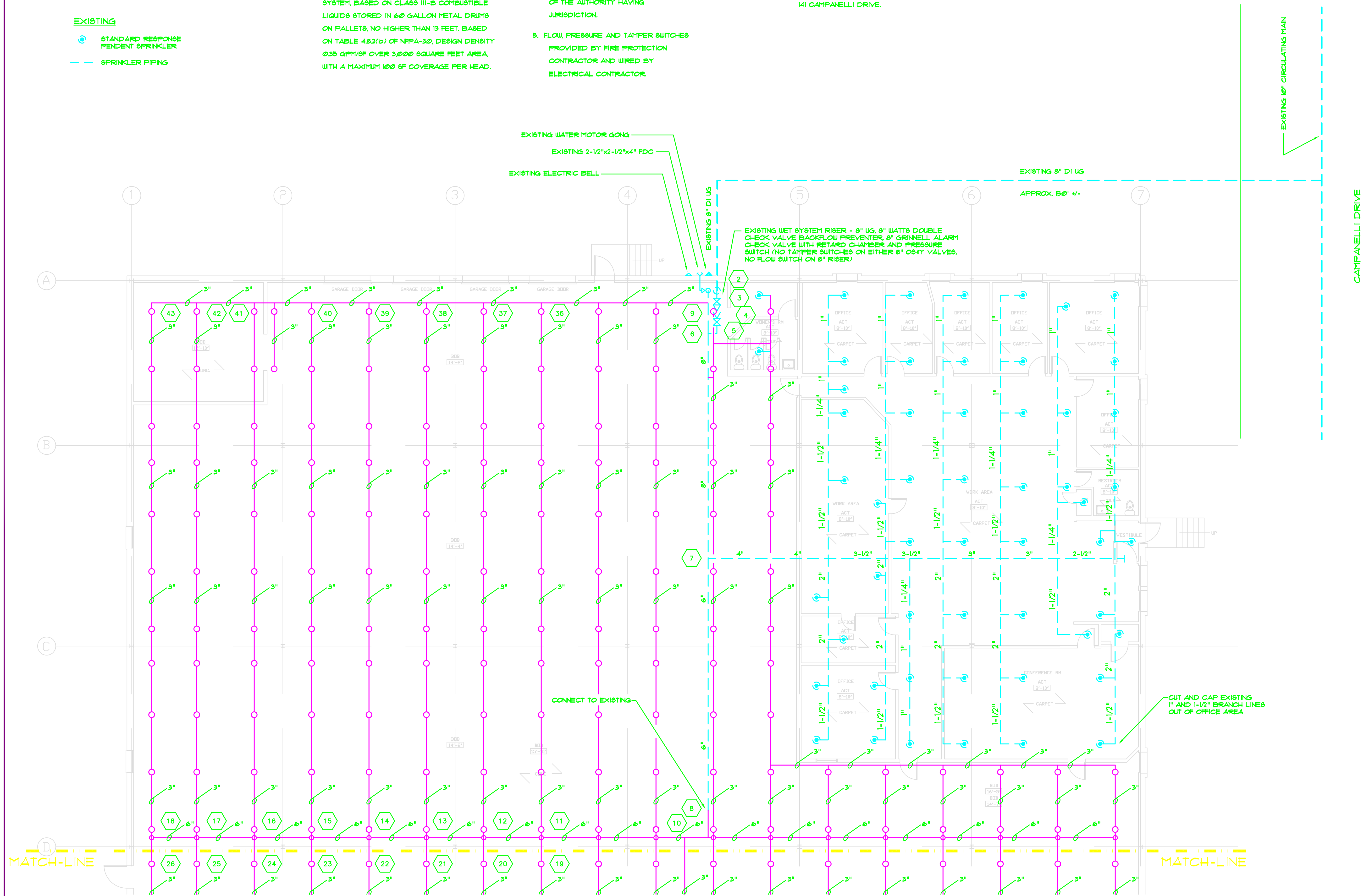
**NOTES**

1. INSTALLATION TO BE IN ACCORDANCE WITH NFPA-13, 2002 ED., NFPA-30, 2000 ED., AND MASSACHUSETTS STATE BUILDING CODE, AND LOCAL STANDARDS AND ORDINANCES.
2. SYSTEM TO BE A HYDRAULICALLY DESIGNED SYSTEM, BASED ON CLASS III-B COMBUSTIBLE LIQUIDS STORED IN 60 GALLON METAL DRUMS ON PALLETS, NO HIGHER THAN 13 FEET. BASED ON TABLE 4.02(b) OF NFPA-30, DESIGN DENSITY 0.35 GPM/GF OVER 3,000 SQUARE FEET AREA, WITH A MAXIMUM 100 SF COVERAGE PER HEAD.
3. ALL HANGERS TO BE IN ACCORDANCE WITH NFPA-13, 2002 EDITION AND MASSACHUSETTS STATE BUILDING CODE SEISMIC REQUIREMENTS.
4. MEET OTHER REQUIREMENTS OF THE AUTHORITY HAVING JURISDICTION.
5. FLOW, PRESSURE AND TAMPER SWITCHES PROVIDED BY FIRE PROTECTION CONTRACTOR AND WIRED BY ELECTRICAL CONTRACTOR.

**FLOW TEST DATA**

STATIC PRESSURE 59 psi  
 RESIDUAL PRESSURE 52 psi  
 FLOW 1090 gpm

TEST CONDUCTED WITH BRAINTREE WATER DEPARTMENT ON 4/16/08 AT 10:15 P.M. THROUGH A 2-1/2" BUTT CONNECTION ON HYDRANTS LOCATED ON CAMPANELLI DRIVE ACROSS FROM 141 CAMPANELLI DRIVE.



**FERNANDEZ & ASSOCIATES**  
 FIRE PROTECTION ENGINEERS

63 Larkin Road  
 Byfield, Massachusetts 01922  
 Telephone 978-499-0172  
 Fax 978-465-2371  
 Email: fff@fernandezassoc.com

COPYRIGHT 2008 FERNANDEZ & ASSOCIATES  
 ALL RIGHTS RESERVED. NO PART OF THIS WORK MAY BE REPRODUCED OR COPIED IN ANY FORM OR BY MEANS - GRAPHIC, ELECTRONIC OR MECHANICAL INCLUDING PHOTOCOPIING, RECORDING, TAPING, OR INFORMATION AND RETRIEVAL SYSTEMS - WITHOUT WRITTEN PERMISSION OF FERNANDEZ & ASSOCIATES

IT IS A VIOLATION UNDER APPLICABLE LAW FOR ANY PERSON, UNLESS ACTING UNDER THE DIRECTION OF A LICENSED PROFESSIONAL ENGINEER TO ALTER ANY ITEM ON THIS DOCUMENT IN ANY WAY.

|     |           |      |
|-----|-----------|------|
| NO. | REVISIONS | DATE |
|     |           |      |
|     |           |      |
|     |           |      |
|     |           |      |

|             |                |
|-------------|----------------|
| JOB NO.     | 382            |
| DRAWN BY    | LFF            |
| DESIGNED BY | LFF            |
| SCALE       | 1/8" = 1' - 0" |
| DATE        | 04/26/08       |

**PROJECT**  
 Combustible Liquids Warehouse  
 Braintree, MA

**TITLE**  
 Fire Protection Layout

**DRAWING NO.**  
 FP-1